

53 Dibbs Street Lismore

Table of Contents

- | [Property Details](#)
- | [Photo Gallery](#)
- | [Map](#)
- | [Contact For Inspection](#)

Property Details

53 Dibbs Street, Lismore



CHARMING HOME - HANDY LOCATION

3  1  0 

Discover this beautifully maintained, mid century home, ideally situated in a flood free location in Lismore, less than 1km from Lismore Base Hospital. Perfect for families, professionals or those seeking a blend of character and convenience!

Features you'll love:

- ◆ Timeless Charm: High ceilings and polished timber floors exude warmth and elegance
- ◆ Spacious Living: Separate formal lounge, dining area adjacent to the kitchen - rear sunroom for extra sitting space
- ◆ Comfort Year-Round: Ducted air-conditioning throughout the home
- ◆ Energy Efficient: Solar power system (22 panels) with Tesla battery storage
- ◆ Outdoor Oasis: Relax on the covered deck overlooking the lush backyard
- ◆ Ample Storage: Large storage area under the house with a 2nd toilet
- ◆ Detached Studio: Perfect for a home office, creative space or guest retreat with power connected and air-conditioning

This home truly offers the best of character, comfort and functionality in a sought-after location. Recently repainted externally, this home presents beautifully both inside and out.

Don't miss your chance to secure this gem!

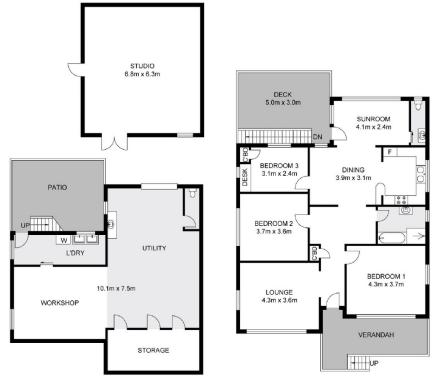
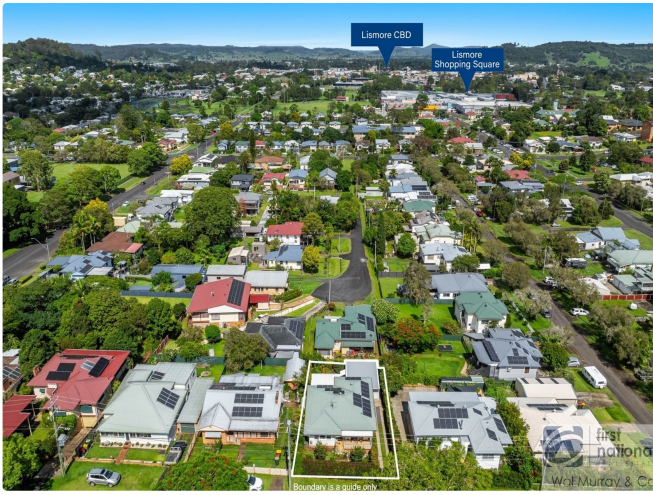
- 3 Bedrooms
- 1 Bathroom
- Ducted Cooling
- Deck
- Floor boards
- Workshop

\$739,000

Photo Gallery







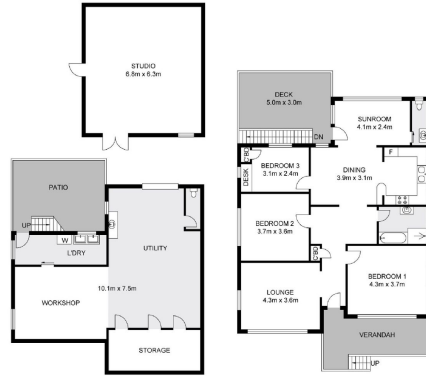
LOWER LEVEL

UPPER LEVEL

INT : 106.1m²
 EXT : 50.6m²
 STUDIO : 42.8m²
 WORKSHOP : 77.6m²

Dimensions are approximate. All information contained herein gathered from sources we believe to be reliable. However we cannot guarantee its accuracy and interested persons should rely on their own enquiries. © visionmedia vision 2024.

53 Dibs Street, Lismore



LOWER LEVEL

UPPER LEVEL

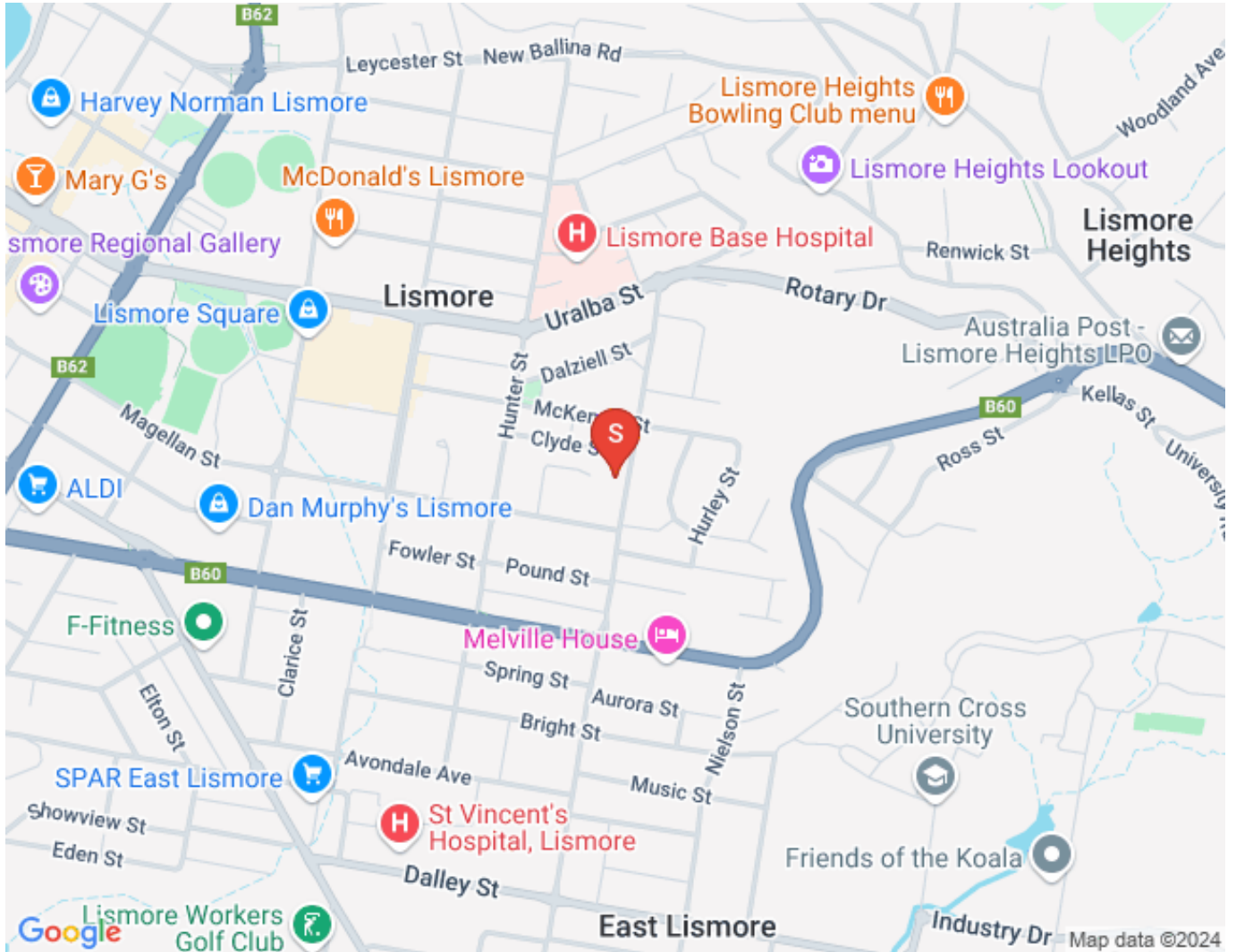
INT : 106.1m²
 EXT : 50.6m²
 STUDIO : 42.8m²
 WORKSHOP : 77.6m²

Dimensions are approximate. All information contained herein gathered from sources we believe to be reliable. However we cannot guarantee its accuracy and interested persons should rely on their own enquiries. © visionmedia vision 2024.

53 Dibs Street, Lismore



Map



Contact For Inspection



BENJAMIN CONTE

LICENSED REAL ESTATE AGENT

0408 368 913

ben@walmurray.com.au